

The background of the entire page is a vibrant tropical pattern. It features repeating illustrations of toucans with large, colorful beaks (yellow, orange, and red) and black-and-white checkered bodies. These are interspersed with bright yellow sunflowers with dark brown centers and large green leaves with yellow veins. The pattern is further defined by vertical bands of black and white checkerboard squares, dotted lines, and wavy lines.

PORTFOLIO

SURFACE PATTERN DESIGN & ILLUSTRATION

GISELE SOBRINHO

About me

Creative print and pattern designer with 5+ years of experience, specialising in textile, surface, and fashion pattern design. Skilled in transforming concepts into unique, aesthetically stimulating patterns for fabrics, apparel and home decor.

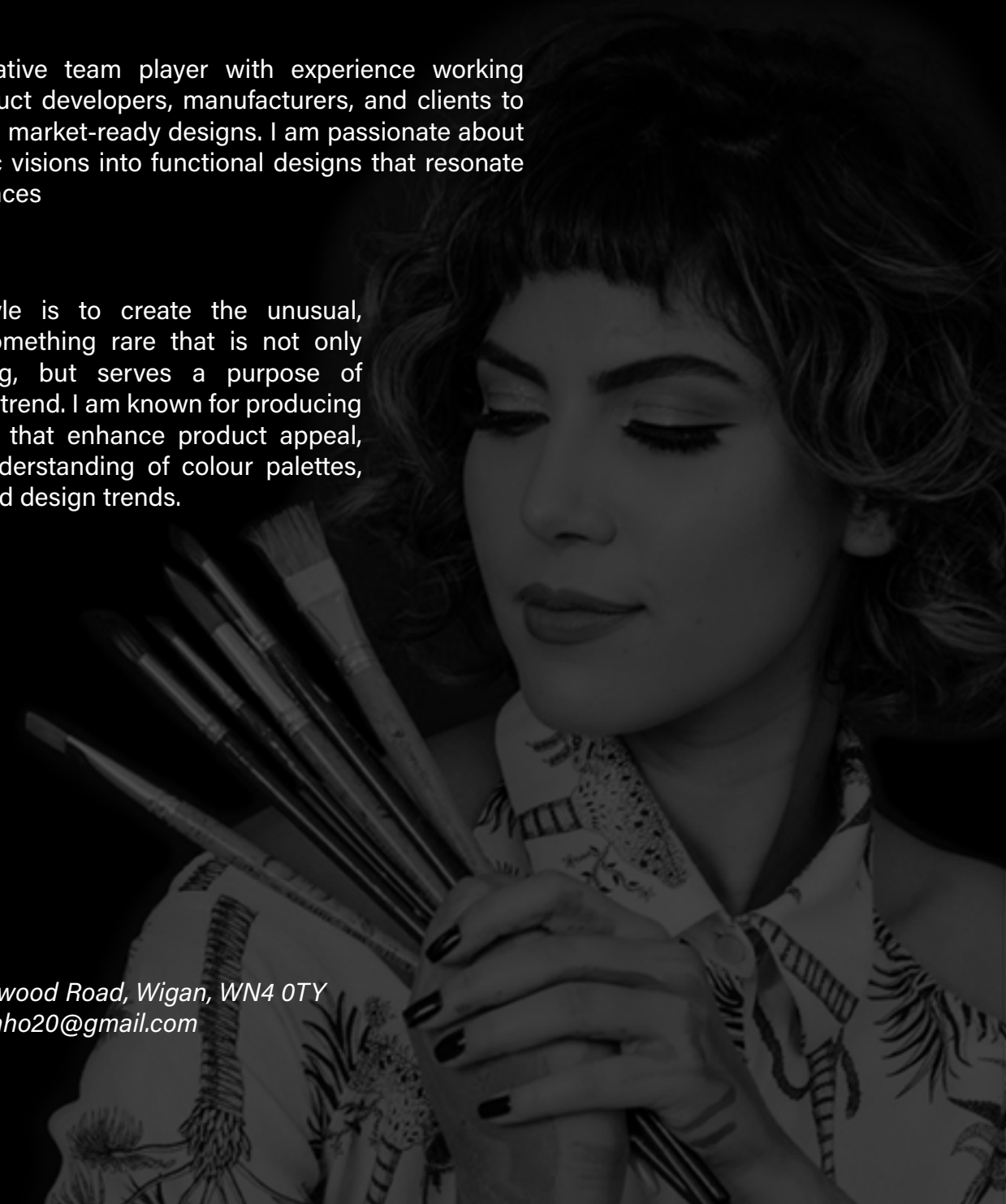
Adept at combining artistic creativity with technical precision, using both hand-drawn techniques like pencil and watercolours, and digital tools such as Adobe Creative Suite and CAD software. Also experience graduating different sizes for scale production.

I am a collaborative team player with experience working closely with product developers, manufacturers, and clients to deliver innovative, market-ready designs. I am passionate about translating artistic visions into functional designs that resonate with target audiences

My personal style is to create the unusual, charming and something rare that is not only visually appealing, but serves a purpose of meeting a market trend. I am known for producing versatile patterns that enhance product appeal, with a strong understanding of colour palettes, fabric textures, and design trends.

Contact Info

address: 375 Garswood Road, Wigan, WN4 0TY
email: giselesobrinho20@gmail.com
tel: 07783279793

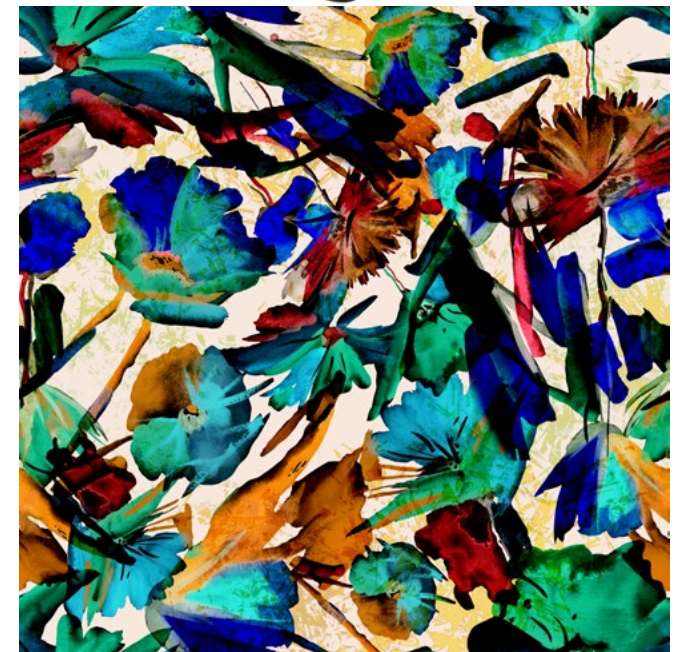




Abstract Flowers



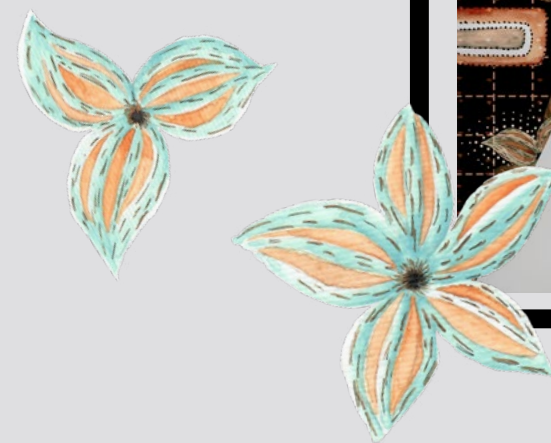
My passion for nature comes accross in this floral design I created and it was inspired by the flowers on display at the palm house in Sefton Park



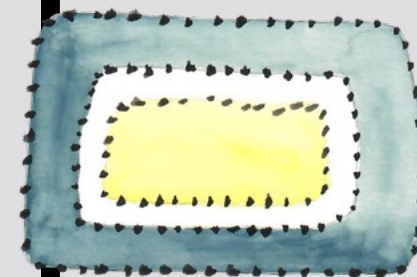
Autumn Vibe



AUTUMN VIBE



The autumn vibes print is inspired by autumn with geometric shapes and stylized flowers, the dark tones were chosen to match both day and night and the earthy tones are inspired by the colors of the season.



Tropical Beach

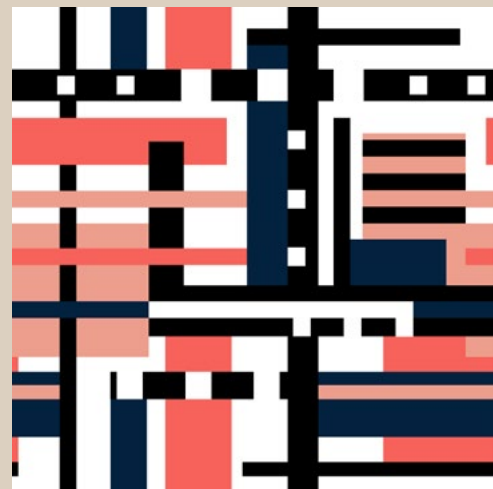
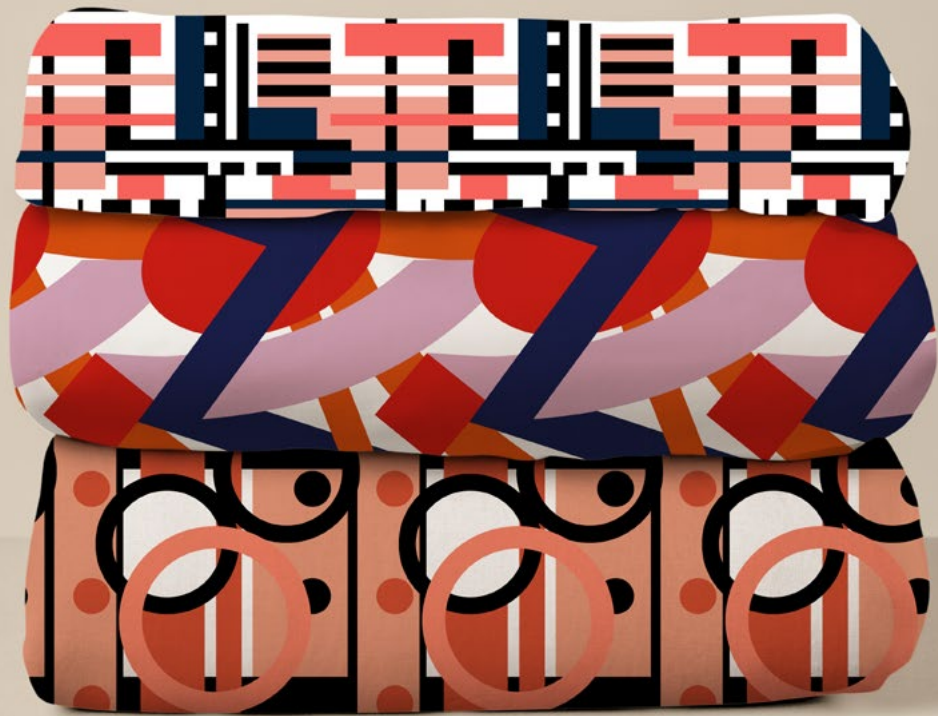


It's time for summer holidays!

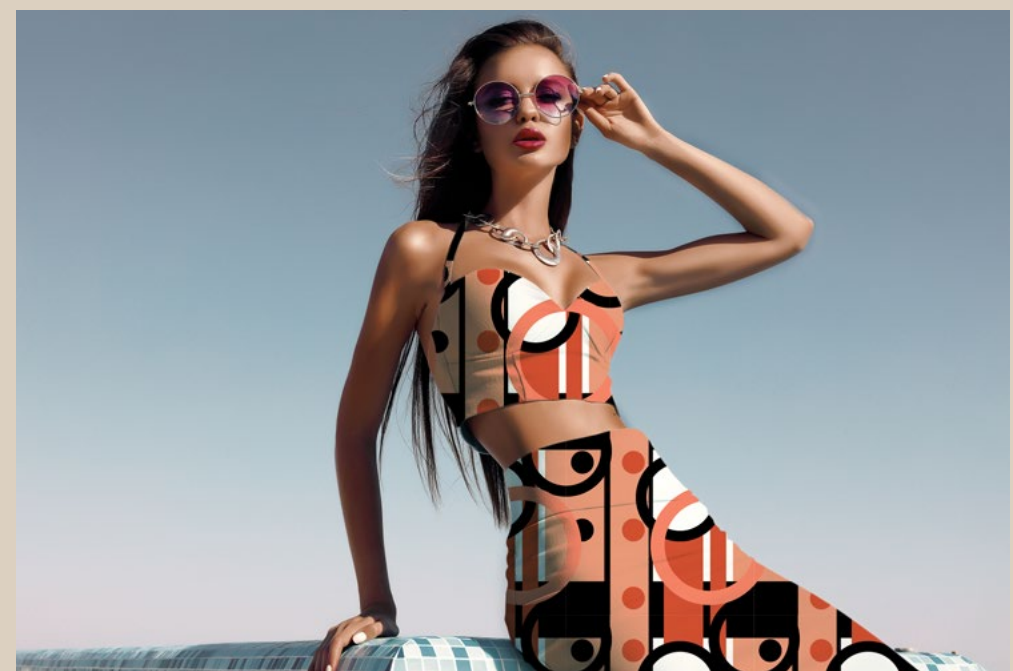
The tropical beach print was inspired by the beaches of Northeast Brazil, full of cultural beauty with colors, toucan designs, flowers and ethnic texture.



Mini geometric collection



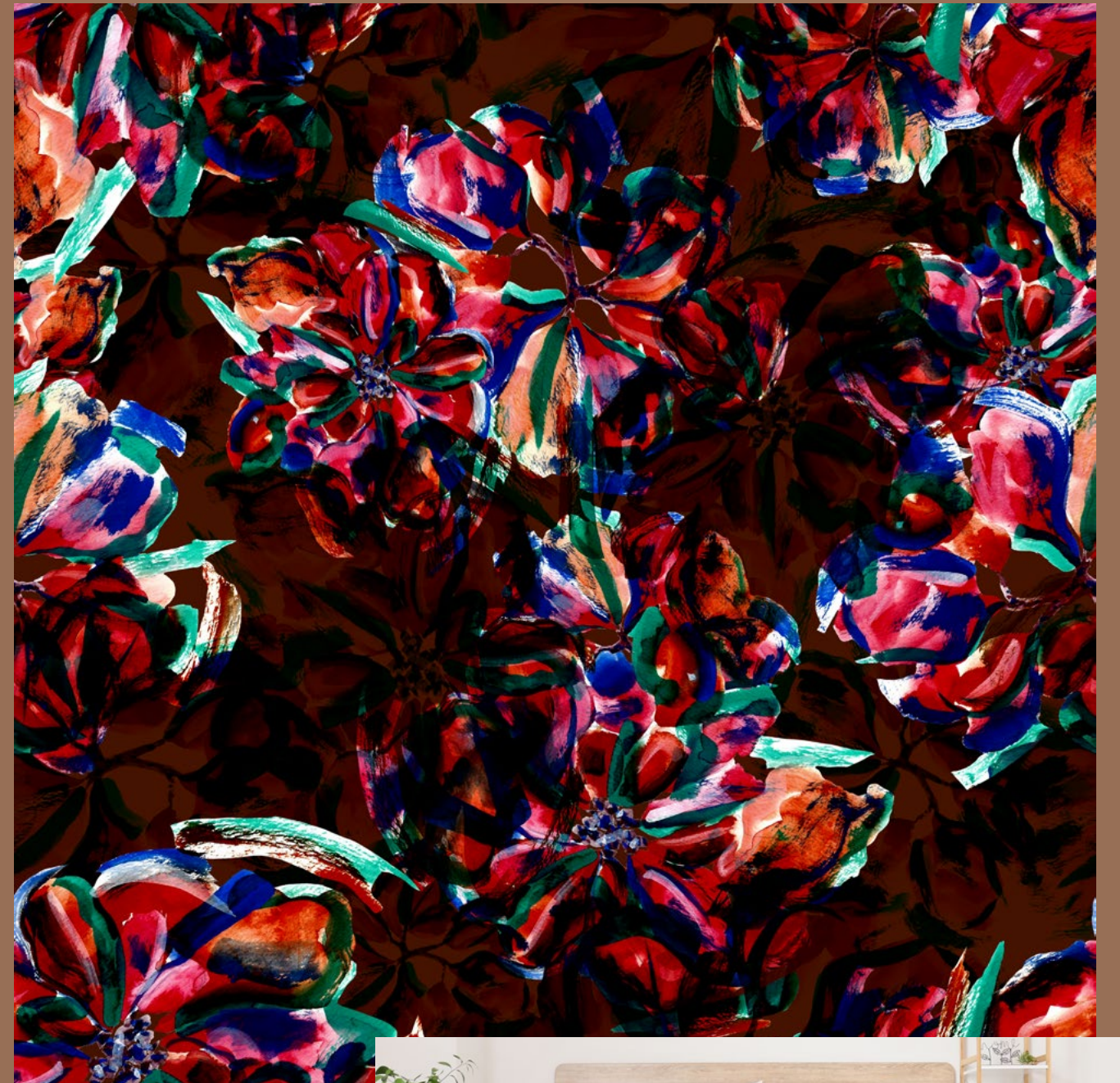
This geometric collection was inspired by geometric styles and shapes



Pattern inspired by the garden at my home in Brazil, where my sister has a passion for flowers and this excited me to produce designs with the flowers in the garden.



Floral Winter





Bauhaus inspiration

Inspired by the Bauhaus style in geometry, having abstract flowers, transparency and paint splashes.



Epiphany of Dawn

Pattern inspired by a manifestation of divinity, known as the Feast of the Kings, when three wise men came to visit the birth of Jesus I was inspired by the theme to create a design that resembled a great celebration.



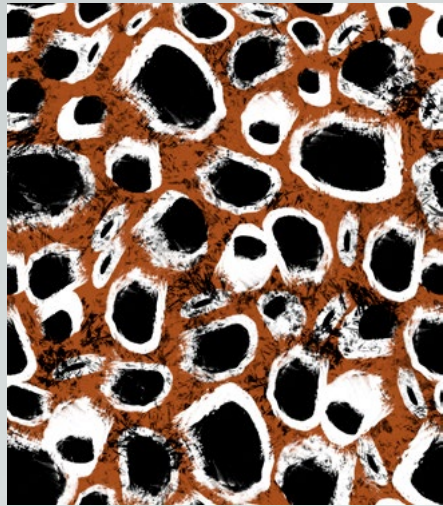
Abstract brush



Pattern created with several different brush textures featuring geometric shapes.

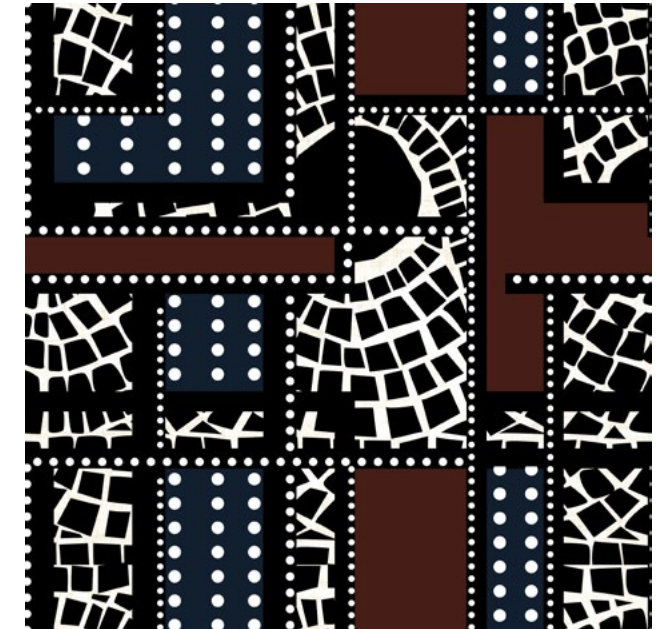
Butterfly spots

Pattern inspired by a butterfly in its spotted colors and shape



Sidewalk of Rio de Janeiro

Pattern inspired by the sidewalks on the coast of Rio de Janeiro beach



The background of the entire image is a repeating pattern. It features stylized toucans with large, colorful beaks (yellow, orange, red) and black-and-white patterned feathers. These are interspersed with bright yellow sunflowers with dark brown centers and large green leaves. The pattern is framed by vertical borders: a black and white checkerboard pattern on the left and right, and a white background with black dots and wavy lines in the center. A central rectangular box with a black border contains the text.

HOPE YOU
ENJOYED